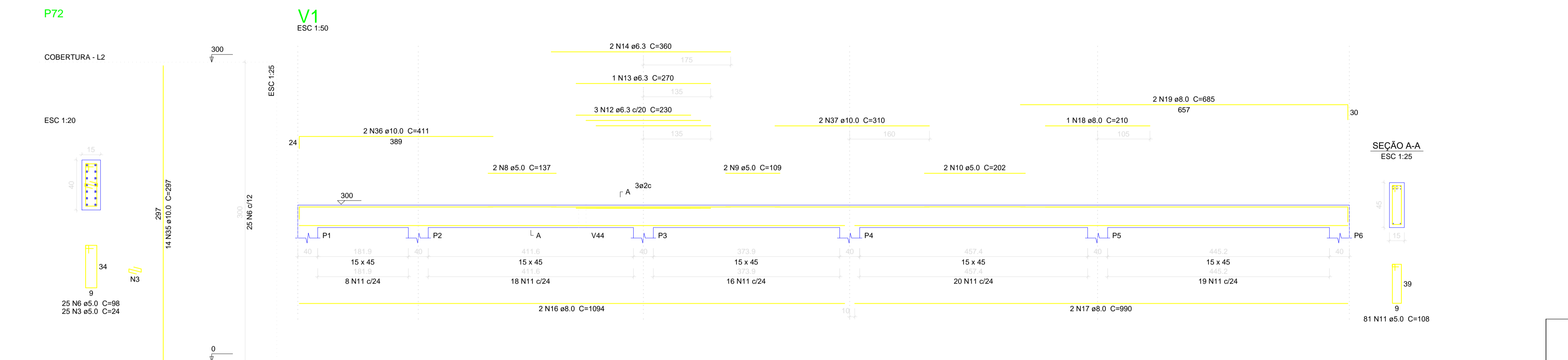


Relação do aço

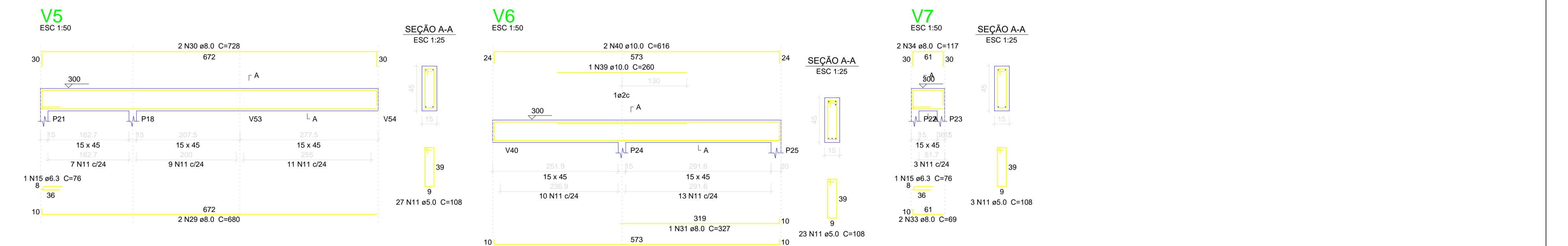
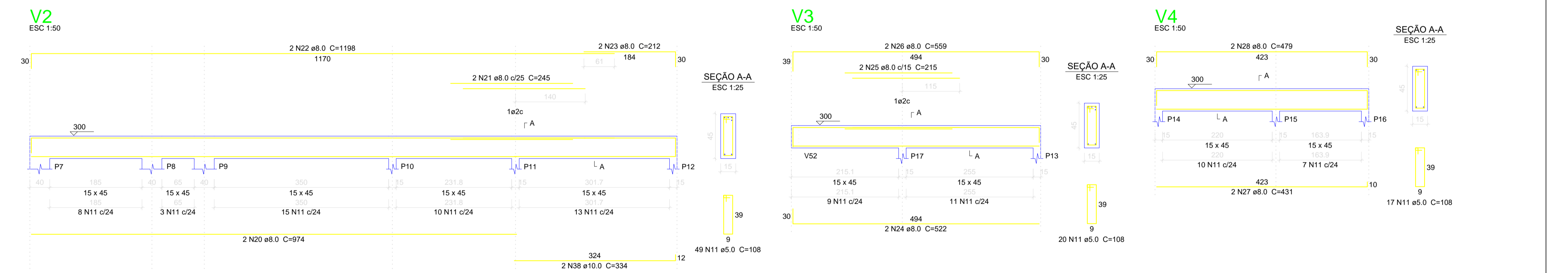
AÇO	N	DIAM (mm)	QUANT (Barras)	UNIT (cm)	C.TOTAL (cm)
CA60	1	5.0	45	118	5310
	2	5.0	20	60	1440
	3	5.0	75	24	1800
	4	5.0	25	128	3200
	5	5.0	75	29	2175
	6	5.0	90	98	8820
	7	5.0	25	108	2700
	8	5.0	2	137	274
	9	5.0	2	109	218
	10	5.0	2	202	404
	11	5.0	220	108	23760
CA50	12	6.3	3	230	690
	13	6.3	1	270	270
	14	6.3	2	360	720
	15	6.3	2	76	152
	16	8.0	2	1094	2188
	17	8.0	2	990	1980
	18	8.0	1	210	210
	19	8.0	2	685	1370
	20	8.0	2	974	1948
	21	8.0	2	245	490
	22	8.0	2	1198	2396
	23	8.0	2	212	424
	24	8.0	2	522	1044
	25	8.0	2	215	430
26	8.0	2	559	1118	
27	8.0	2	431	862	
28	8.0	2	479	958	
29	8.0	2	680	1360	
30	8.0	2	728	1456	
31	8.0	1	327	327	
32	8.0	2	589	1178	
33	8.0	2	69	138	
34	8.0	2	117	234	
35	10.0	48	297	14256	
36	10.0	2	411	822	
37	10.0	2	310	620	
38	10.0	2	334	668	
39	10.0	1	260	260	
40	10.0	2	616	1232	
41	12.5	42	297	12474	



Resumo do aço

AÇO	DIAM (mm)	C.TOTAL (m)	PESO + 10 % (kg)
CA50	6.3	18.4	4.9
	8.0	201.2	87.3
	10.0	178.6	121.1
	12.5	124.8	132.2
PESO TOTAL (kg)			345.5
CA60	5.0	501.1	84.9
PESO TOTAL (kg)			84.9

Volume de concreto (C-25) = 5.53 m³
Área de forma = 88.23 m²



PROJETO DE ENGENHARIA PRANCHA 08/14

OBJETO: Projeto Estrutural Hospital Municipal
END: Rua 16 nº 1.063 - Bairro Nacib Jabur Maluf - Itapagipe/MG
PROP: Município de Itapagipe-MG
CPF/CNPJ: 21.226.840/0001-47

Quadro de assinaturas:

Proprietário CPF/CNPJ	Benice Nery Maia Prefeita Municipal
Resp. Técnico CPF/CNPJ	Secretaria Municipal de Obras Rodolfo Costa Aguiar CREA/SP:5070412203-LP

Aprovação: